

# BIODIVERSITY WARRIORS

by  KEHATI

## Aksi Konservasi Terumbu Karang

---

Kezia Ruth Marganti Sitompul

# Gambaran umum

## Terumbu karang

- What are corals?

## Pentingnya terumbu karang

- The importance of coral reefs

## Ancaman terhadap terumbu karang

- Threats to reefs

## Apa yang bisa kita lakukan untuk melindungi terumbu karang?

- What can be done to protect reefs?



# Apa itu TERUMBU KARANG ?

Terumbu karang

**Karang keras** Hard corals



**Karang lunak** Soft corals



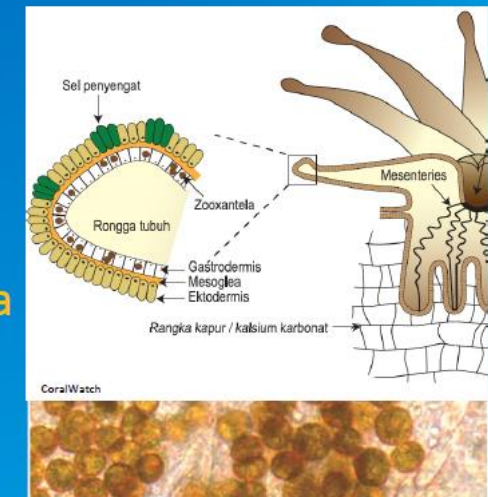
Hewan invertebrata dari filum cnidaria (sama seperti ubur-ubur dan anemon)

Hewan ini bersimbiosis dengan alga  
Alga menyediakan makanan bagi coral  
Coral menjadi tempat hidup bagi alga

Terumbu Karang

## Energi bagi terumbu karang

- Alga berukuran mungil atau zooxantela (alga simbiotik) hidup di dalam struktur karang
- Zooxantela memberi warna dan energi bagi terumbu karang untuk tumbuh



What are corals? Energy for corals: Tiny algae, called zooxanthellae (or symbiotic algae), live within the coral. This provides the corals with colour and the energy they need to grow.



# PENTINGNYA Terumbu Karang

- Tempat tinggal berbagai hewan
- Perlindungan Pesisir
- Penyerap karbon, Penghasil Oksigen
- Industri Perikanan
- Perikanan Lokal
- Pariwisata
- Penghasil produk pengobatan
- Sumber bahan baku

BIODIVERSITY  
WARRIORS



Setiap hari  
**500 juta orang**  
menggantungkan hidupnya pada  
terumbu karang yang sehat



Photos: Marthen Welby and Tane Sinclair-Taylor





# THREATS TO CORAL REEFS CLIMATE CHANGE

BIODIVERSITY  
WARRIORS



Increased greenhouse gases from human activities result in climate change and ocean acidification.

CLIMATE CHANGE = OCEAN CHANGE



## CO<sub>2</sub>

The world's ocean is a massive sink that absorbs carbon dioxide (CO<sub>2</sub>). Although this has slowed global warming, it is also changing ocean chemistry.

## HOW YOU CAN HELP

Shrink your carbon footprint to reduce greenhouse gases.



Drive less.



Reduce, reuse or recycle.

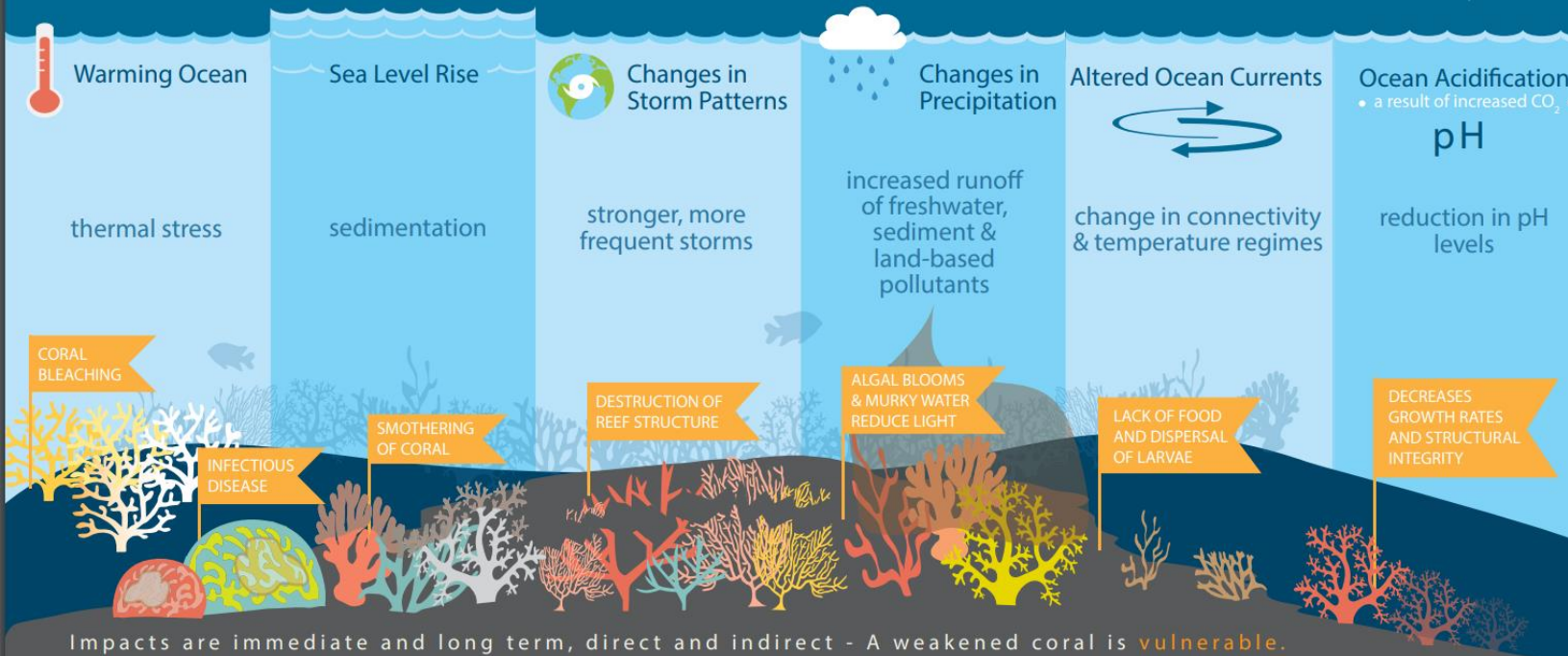


Purchase energy-efficient appliances and lightbulbs.



Print less. Download more. Use less water.

## CLIMATE CHANGE dramatically affects CORAL REEF ECOSYSTEMS



Do your part to help improve overall coral reef condition.



Reduce the use of lawn and garden chemicals.



DO NOT dump household chemicals in storm drains.



Choose sustainable seafood. [www.FishWatch.com](http://www.FishWatch.com)



Learn about good reef etiquette and practice it when in the water.



Volunteer for beach and waterway clean ups.



# Catat informasi survei

- Nama anda
- Tanggal dan jam
- GPS (jika ada)
- Kedalaman
- Suhu laut
- Cuaca
- Aktivitas

LEMBAR DATA CORALWATCH

nama terumbu karang dan request:

Nama anda: \_\_\_\_\_

Tanggal dan jam: \_\_\_\_\_

GPS: \_\_\_\_\_

Kedalaman m / feet: \_\_\_\_\_

Suhu laut C / F: \_\_\_\_\_

Cuaca: \_\_\_\_\_

Sarang / mangrove / hutan: \_\_\_\_\_

Aktivitas: snorkeling / menyelam / snorkeling / menyelam / other (specify): \_\_\_\_\_

Warna terumbu karang: \_\_\_\_\_

Date made survey posted: \_\_\_\_\_

Reef walking

Snorkelling or diving

# Monitoring Kesehatan Terumbu Karang

Kondisi stress yang dialami terumbu karang dapat dilihat dengan memperhatikan warnanya.

Tabel Kesehatan Karang mengukur kesehatan karang dengan melihat warnanya.

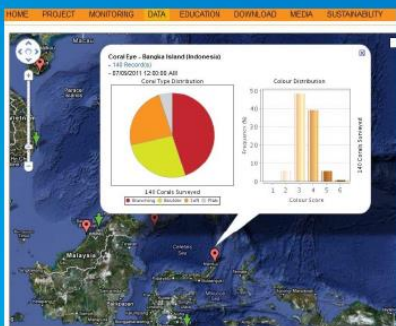
Record survey details: name, date, time, GPS (if possible), water temperature, depth, activity and conditions.



## Memantau karang - tips

# Memasukkan data

Masukkan data anda secara online dan lihat hasilnya di [www.coralwatch.org](http://www.coralwatch.org)



DATA EDUCATION DOWNLOAD MEDIA SUSTAINABILITY LINKS CONTACT

Add New Survey

You must sign in to submit a survey.

Group Name: \_\_\_\_\_

Participating Act: \_\_\_\_\_

Country of Survey: \_\_\_\_\_

Reef Name: \_\_\_\_\_

Depth: \_\_\_\_\_

Latitude: \_\_\_\_\_

Longitude: \_\_\_\_\_

Observation Date: \_\_\_\_\_

Time: \_\_\_\_\_

Light Condition: \_\_\_\_\_

Depth (meters): \_\_\_\_\_

Water Temperature (°C): \_\_\_\_\_

Activity: \_\_\_\_\_

Comments: \_\_\_\_\_

Submit

Tips for monitoring: Enter your data online and view your results

## Tabel Kesehatan Karang

### Warna-warna terumbu yang umum dijumpai

Coral Health Chart: Most common colours on the reef





# Apa yang bisa dilakukan ?

BIODIVERSITY  
WARRIORS

by KEHATI

- ❖ Belajar
- ❖ Volunteer
- ❖ Spread the words



1. Bali Sea Turtle Society
2. Meru Betiri Service Camp
3. CoralWatch Ambassador 2<sup>nd</sup> Workshop
4. Conservation Camp Tambora Muda
5. Nusa Dua Reef Foundation





# Kenapa bergabung bersama Biodiversity Warriors ?

BIODIVERSITY  
WARRIORS

by KEHATI

- Menantang diri
- Ilmu
- Networking
- Jalan - jalan





# This is my Action what's Yours ?



Selalu ambil kesempatan yang ada di depanmu untuk belajar dan berkembang

“People Needs Nature to thrive” (Conservation International)  
Apapun ilmu dan passionmu gunakan untuk konservasi



# Terima Kasih

BIODIVERSITY  
WARRIORS



**Any Question ?**

 **@keziaruthm**

**Want to know more ?**

 **@nusaduaareeffoundation**


 **@baliseaturtlesociety**

<http://biodiversitywarriors.kehati.or.id/>

 **@bwkehati**

 **<https://coralwatch.org/>**  
**@coral\_watch**

 [www.kehati.or.id](http://www.kehati.or.id)

 **@yayasankehati**